



PRODUCT CATALOG 2018




Positech innovation Inc. has been satisfying clients postural needs since 1998. In Canada, we proudly develop, manufacture and promote leading edge and unmatched postural support devices intended to provide the optimal posture for every individual using a wheelchair.

Our wide range of products has a unique feature, the 'flexible customization' capability, meaning it can be modified in time, all the time & over time to better comply with the body condition evolution.

Our modular approach allows the addition of components to build, maintain and control at best the most advantageous posture for all wheelchair users.

You sit well with us.

	Table of Contents	Page
	Terms & Conditions	3
	*FLEXUSTM	4
	*BACKUSTM & CURVUSTM	5
	*AXILUSTM	6
	*SUMMUSTM	7
	*STOPUSTM	8
	STARUSTM	9
	FORMUSTM	10

(*) These products comply to : RESNA WC-4: 2012 Section 20 : Seating Systems for Use in Motor Vehicles / ISO 16840-4 Wheelchair Seating - PART 4 : Seating Systems for Use in Motor Vehicles.

TERMS AND CONDITIONS OF SALE

1. AGREEMENT

All purchases orders, order confirmations, order confirmation changes and/or quotations for the purchase of products from Positech Innovation Inc. ("Positech") shall be governed by these terms and conditions (the "T&C"). Upon Positech order confirmation, these T&C become a binding contract with you (the "Buyer") and they supersede any other document or agreement unless approved in writing by Positech.

2. RETURNS, EXCHANGES, AND CANCELLATION

A return authorization number must be issued by Positech on all returns. Only unused, stock items, in re-sellable condition, in original packaging, with a delivery date of two (2) months or less will be considered for credit toward future purchases from Positech, with a restocking charge for an amount equivalent to 20% of the purchase price. All returns must be shipped to Positech freight prepaid.

If the Buyer wishes to cancel an order already accepted by Positech, the Buyer must send a written request to Positech, and Positech shall confirm in writing, within a reasonable delay, its authorization or refusal to cancel the order. Order cancellations are subject to cancellation charges as deemed applicable by Positech to cover all costs and expenses incurred prior to the cancellation of the order.

3. ADDITIONAL COSTS AND TAXES

The prices quoted do not include any governmental taxes or other applicable taxes. All such additional costs and taxes shall be paid by the Buyer.

4. PAYMENT AND CHANGES IN PAYMENT TERMS

Unless indicated otherwise in writing by Positech, the invoices shall be paid net 30 days from invoice date. Late payment shall bear interest at the rate of 2% per month (24% per year). Positech may modify at any time and at its sole discretion, the credit terms.

Should Positech believe in good faith that the Buyer's ability to make payments may be impaired, Positech shall have the right to cancel the order, in whole or in part. Under the circumstances, the Buyer shall remain liable for the payment of all products already delivered.

5. DELIVERY TERMS AND TITLE

Positech shall make the products available to the Buyer at Positech's place of business confirmed on the delivery notice sent by Positech to the Buyer and terms are EXW Positech's Place of Business (Incoterms 2010).

All transport, handling, brokerage, insurance costs, taxes and duties and any other costs are not included in the price and are at the Buyer's expense, unless otherwise agreed upon with Positech in writing.

Title to all products shipped and all risk of loss or damage will be passed on to the Buyer upon acceptance of the delivery in accordance with the terms set forth hereinabove.

6. FORCE MAJEURE

Positech shall not be responsible for its inability to complete the Buyer's order under the terms, conditions and prices as contracted when prevented from doing so by any cause beyond its control, including but not limited to, Acts of God, strikes, inability to obtain labour, fuel or raw materials and extraordinary cost escalations in material or services. Positech shall promptly notify the Buyer of any such inability to perform.

7. WARRANTY AND LIMITATION OF LIABILITY

Metallic components of products purchased from Positech are warranted against defects in workmanship and material for a period of two (2) years from the date of delivery of the product to the first consumer.

Textile components of products purchased from Positech are warranted against defects in workmanship and material for a period of ninety (90) days from the date of delivery of the product to the first consumer.

Non-metallic and non-textile components of products purchased from Positech are warranted against defects in workmanship and material for a period of one (1) year from the date of delivery of the product to the first consumer.

Positech's obligations under this warranty are limited to replacing (transportation costs at the Buyer's expense) or repairing, at its option, any products which under normal and proper use and maintenance are proved to be defective to Positech, in its sole discretion, within the warranty period, provided that Positech has had the opportunity to inspect them.

This warranty is not transferable and only applies to the first consumer purchase through an authorized Positech dealer.

This warranty does not cover products or parts thereof which (i) normally wear out due to the general wear and tear of standard use, (ii) are modified, altered, inadequately stored or kept, or (iii) are not installed, adjusted, used or maintained in accordance with Positech's instructions. In addition to the foregoing, this warranty does not cover punctures, tears, or burns.

THE FOREGOING IS POSITECH'S SOLE WARRANTY, ALL OTHER WARRANTIES, EXPRESSED OR IMPLIED, INCLUDING WARRANTIES OF FITNESS FOR PURPOSE AND MERCHANTABILITY, ARE EXCLUDED AND DISCLAIMED TO THE FULL EXTENT PERMITTED BY LAW. IN NO EVENT SHALL THE BUYER BE ENTITLED TO MORE THAN THE PRICE OF THE PURCHASED PRODUCTS AT THAT TIME AS FINAL PENALTY AND DAMAGE. IN NO EVENT, WHETHER AS A RESULT OF CONTRACT, TORT, STRICT LIABILITY OR OTHERWISE,

SHALL POSITECH BE LIABLE FOR SPECIAL, INCIDENTAL, CONSEQUENTIAL OR PUNITIVE DAMAGES, INCLUDING BUT NOT LIMITED TO, LOSS OF USE, PROFIT OR REVENUE.

The Buyer understands and agrees that the Positech's products may be dangerous and result in injury, worsening of the condition or damage to property if not used properly. Consequently, the Buyer shall inform the user that he/she must (i) comply with all specifications, instructions and other requirements provided by Positech with the products, on Positech's website, in manuals, data sheets, on labels or packaging, and this T&C before making use of the products, and (ii) use the products under the supervision of a therapist in the case of severe deformities or when used for therapeutic purposes.

The Buyer shall hold harmless, indemnify and defend Positech from and against any and all claims, demands, causes of action, suits or judgments (including costs, expenses and reasonable attorney fees incurred in connection therewith) for the injury to any person or for loss of or damage to property arising out of or in connection with the improper use of the products whether or not caused by Buyer's negligence and for any default hereunder.

The Buyer may have additional rights by law which may vary from one jurisdiction to another. Positech does not hereby intend to limit or exclude the rights of the Buyer beyond the limits allowed by law.

8. CONFIDENTIAL INFORMATION AND INTELLECTUAL PROPERTY RIGHTS

The Buyer shall not disclose, use or reproduce any confidential information obtained from Positech. The Buyer shall return all material containing Positech's confidential information upon Positech's request.

Unless otherwise agreed, the Buyer does not acquire any property rights in products designs, inventions, concepts, plans, drawings and documents which may have been made available to it. Positech shall also remain the exclusive owner of the intellectual property rights in connection to the products or to any information the Buyer may have obtained from Positech. Any use of this intellectual property is forbidden except as authorized in writing by Positech.

9. NON-WAIVER

The waiver by Positech of any of its rights under these T&C in any one or more instances shall not constitute a waiver of any other rights hereunder or of such rights on any future occasion.

10. ASSIGNMENT

This contract may not be assigned by the Buyer unless authorized in writing by Positech.

11. GOVERNING LAW AND JURISDICTION

These T&C shall be governed by and construed in accordance with the laws of the Province of Quebec. The parties irrevocably and exclusively attorn to the jurisdiction of the competent courts of the province of Quebec and elect domicile in the judicial district of Montreal for all intent and purposes. The parties agree that the United Nations Convention on Contracts for the International Sale of Products does not apply to this agreement and is strictly excluded.

12. SEVERABILITY

Should any provision of these T&C be or become illegal or unenforceable, in whole or in part, the remaining provisions in these T&C shall nevertheless be valid, binding and enforceable in accordance with their terms, unless the whole purpose of these T&C is therefrom affected.

13. ENTIRE AGREEMENT

These T&C shall be binding upon the parties and their assignees and constitutes the sole and exclusive agreement between the Buyer and Positech with respect to the matter contained herein and supersedes all prior representations and agreements. These T&C may not be altered, amended, modified or rescinded except by a writing signed by the Buyer and Positech.

BACKREST SOLUTIONS



- A ONE-SIZE-FITS-ALL backrest system with a 2-anchor contoured rigid aluminum structure with its extendable and detachable upholstered cushion
- A comprehensive customization adjustments of all configurations - width, height, depth and angle – to provide user with the ultimate posture at all time and over time
- Modular system using compatible postural accessories : STOPUST™, AXILUS™, SUMMUS™, FORMUST™ & STARUST™
- FLEXUS™ evolves with the desired therapeutic approach implemented by the clinician to optimize in time the user's posture
- FLEXUS™ adapts to all types of tubular frame wheelchairs
- Two sizes, adult & child, are available
- Removable and hand washable backrest cover

SPECIFICATIONS					
	ADULT	CHILD		ADULT	CHILD
WIDTH (Wheelchair)	14 – 20 in. 355 – 510 mm	11 – 14 in. 279 – 356 mm	FLEXUS™ ONE-SIZE-FITS-ALL BACKREST SYSTEM Contoured Rigid Structure & Upholstered Backrest Cushion Anti-Movement Strap Anchor Kit 1 1/8 in. (pair)	FLEX1200	FLEX1250
HEIGHT	18 – 26 in. 457 – 660 mm	15 – 18 in. 381 – 457 mm			
DEPTH	from (-)1 ½ to (+)2 in. from (-)38 to (+)51 mm	from (-)2 to (+)1 in. from (-)51 to (+)25 mm		FLEX1230	FLEX1230
ANGLE (Slant)	(-)15° to (+)15° 5° increments	(-)15° to (+)15° 5° increments		FLEX1235	FLEX1235
WEIGHT	75– 275 lbs/34– 125kg	35– 150 lbs/16– 68kg			



Width adjustment



Height adjustment



BACKREST SOLUTIONS



- A 2-part system made of a tension adjustable canvas straps firm fabric structure with its detachable upholstered backrest cushion
- Can be personalized at anytime to the contour of the user's back for a full and comfortable support
- BACKUS™ adapts to all types of wheelchairs
- Allows the wheelchair to be folded
- Available for adult & child in various sizes
- Depending of the selected size, it may have 3 to 5 canvas straps to optimize back support
- Modular system using compatible postural accessories : STOPUST™, AXILUS™, SUMMUS™, FORMUS™ & STARUST™
- Removable and hand washable backrest cover

SPECIFICATIONS			HEIGHT			
	ADULT & CHILD	WIDTH	12 to 15"	15 to 18"	18 to 21"	21 to 24"
WIDTH	10 – 23 in. 254 – 584 mm	10 to 11"	BACK101115	BACK101118		
		12 to 13"	BACK121315	BACK121318	BACK121321	
		14 to 15"	BACK141515	BACK141518	BACK141521	BACK141524
HEIGHT	12 – 24 in. 305 – 610 mm	16 to 17"	BACK161715	BACK161718	BACK161721	BACK161724
		18 to 19"	BACK181915	BACK181918	BACK181921	BACK181924
		20 to 21"	BACK202115	BACK202118	BACK202121	BACK202124
WEIGHT	≤ 21" – 250 lbs – 113kg 23" – 300 lbs – 136kg	22 to 23"	BACK222315	BACK222318	BACK222321	BACK222324

N.B. FOR BACKUS & CURVUS, THEIR ACTUAL HEIGHTS ARE 15-18-21 & 24". IT IS THE INSTALLATION ON THE CANES THAT WILL DEFINE THE FINAL HEIGHT.



- Specially designed for a gibbosity condition & abnormal deformities of the back profile, a 2-part system made of a tension adjustable canvas straps extensible textile structure with its detachable upholstered backrest cushion
- Can be personalized to the contour of the gibbosity for a full and comfortable support
- CURVUS™ adapts to all types of wheelchairs
- Allows the wheelchair to be folded
- Depending of the selected size, may have 3 to 5 canvas straps
- Available for adult & child
- Modular system using compatible postural accessories : STOPUST™, AXILUS™, SUMMUS™, FORMUS™ & STARUST™
- Removable and hand washable backrest cover

SPECIFICATIONS			HEIGHT			
	ADULT & CHILD	WIDTH	12 to 15"	15 to 18"	18 to 21"	21 to 24"
WIDTH	10 – 23 in. 254 – 584 mm	10 to 11"	CURV101115	CURV101118		
		12 to 13"	CURV121315	CURV121318	CURV121321	
		14 to 15"	CURV141515	CURV141518	CURV141521	CURV141524
HEIGHT	12 – 24 in. 305 – 610 mm	16 to 17"	CURV161715	CURV161718	CURV161721	CURV161724
		18 to 19"	CURV181915	CURV181918	CURV181921	CURV181924
		20 to 21"	CURV202115	CURV202118	CURV202121	CURV202124
WEIGHT	≤ 21" – 250 lbs – 113kg 23" – 300 lbs – 136kg	22 to 23"	CURV222315	CURV222318	CURV222321	CURV222324

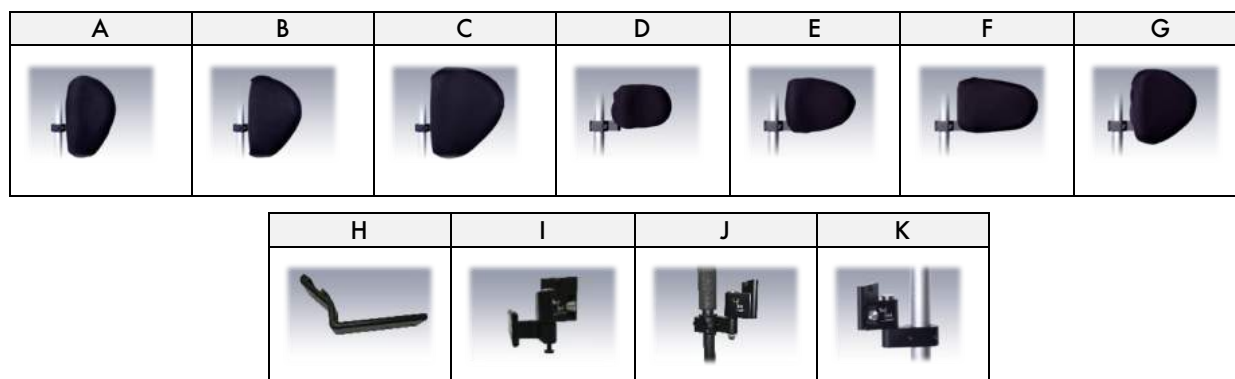
POSTURAL ACCESSORIES SELECTION



- A complete range of lateral thoracic supports made of a unique and durable injectable foam protected by a neoprene cover
- Standard and swing-away anchors options available
- Both sides can be customised with different configurations and cushions
- Adjustable independently in width & height to enhance the proper alignment of the chest
- Available for adult & child
- Modular system using compatible postural backrests & accessories : FLEXUSTM, BACKUSTM, CURVUSTM, SUMMUSTM & STARUSTM
- 7 different sizes & shapes
- Removable and hand washable cover

SPECIFICATIONS		CUSHIONS	
		ADULT	CHILD
A	Small - 10 x 5" (25 x 12cm) - left	AXIL1222L	
	Small - 10 x 5" (25 x 12cm) - right	AXIL1222R	
B	Medium - 10 x 6" (25 x 15cm) - left	AXIL1223L	
	Medium - 10 x 6" (25 x 15cm) - right	AXIL1223R	
C	Large - 9 x 7" (23 x 18cm) - left	AXIL1224L	
	Large - 9 x 7" (23 x 18cm) - right	AXIL1224R	
D	X-Small - 3 1/2 x 5" (8 x 12cm)		AXIL1255
E	Small - 4 1/2 x 6" (11 x 15cm)		AXIL1256
F	Medium - 4 1/2 x 7" (11 x 18cm)		AXIL1257
G	Large - 6 1/2 x 6" (16 x 15cm) - left		AXIL1258L
	Large - 6 1/2 x 6" (16 x 15cm) - right		AXIL1258R
		HARDWARE	
H	Standard Anchor - FLEXUSTM - Adult - each	AXIL1298	
	Standard Anchor - FLEXUSTM - Child - each	AXIL1297	
I	Swing-away Anchor - FLEXUSTM - left	AXIL1299L	
	Swing-away Anchor - FLEXUSTM - right	AXIL1299R	
J	Standard Anchor - BACKUSTM/CURVUSTM - left	AXIL1350L	
	Standard Anchor - BACKUSTM/CURVUSTM - right	AXIL1350R	
K	Swing-away Anchor - BACKUSTM/CURVUSTM - left	AXIL1355L	
	Swing-away Anchor - BACKUSTM/CURVUSTM - right	AXIL1355R	
	Diameter Adaptor - 1 1/8" - BACKUSTM/CURVUSTM - pair	AXIL1361	

N.B. TO ORDER AN OUTER CUSHION COVER, PLEASE ADD THE LETTER < C > TO THE PRODUCT CODE.



POSTURAL ACCESSORIES SELECTION



- A complete multidirectional headrest system
- Made of rigid and moldable ABS structure shielded by a comfy foam cushion covered of a neoprene envelop
- Easy adjustable multijointed hardware with NO protrusion
- Modular system using compatible postural backrests & accessories : FLEXUS™, BACKUS™, CURVUS™, AXILUS™ & STARUS™
- 6 different shapes of cushion
- Removable and hand washable cover

SPECIFICATIONS		CUSHIONS	
		ADULT / CHILD	
A	Small - 4 1/2 x 8" (11 x 20cm)		SUMM1111
B	Medium - 5 x 10" (12 x 25cm)		SUMM1112
C	Large - 5 x 14" (12 x 35cm)		SUMM1113
D	Occipital - 6 x 12" (15 x 30cm)		SUMM1117
E	Encompassing + occipital - 6 x 12" (15 x 30cm)		SUMM1118
F	Semi-encompassing + occipital - 6 x 9" (15 x 23cm)		SUMM1119
		HARDWARE	
G	Multi-jointed support holder		SUMM1101
H	Backrest fastener		SUMM1110
I	Reinforcement bar (only)		SUMM1106

N.B. TO ORDER AN OUTER CUSHION COVER, PLEASE ADD THE LETTER < C > TO THE PRODUCT CODE.

A	B	C
D	E	F
G	H	I

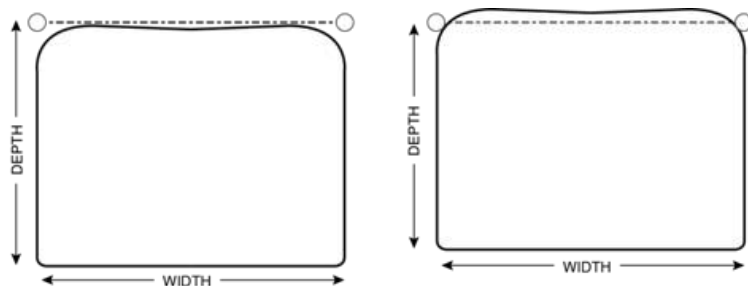
POSTURAL ACCESSORIES SELECTION



- Anti-slip & waterproof seat cushion made of multi-density foams resting on a firm base for an optimal dispersion of the pelvic pressure zones
- A unique combination of fabrics creates a true anti-slip effect
- Makes it more difficult for the user to slide off of a wheelchair.
- It helps retain the proper position of the pelvis and to maintain the desired alignment of the spine
- Outer & inner layers of waterproof barrier for added protection
- Available in Child & Adult configurations with 18 dimensions
- Compatible with postural backrests : FLEXUS™, BACKUS™ & CURVUS™
- Hand washable cover

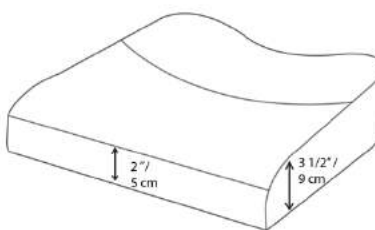
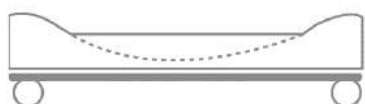
SPECIFICATIONS			DEPTH*				
16 x 18"		WIDTH**	11 to 12"	13 to 14"	15 to 16"	17 to 18"	19 to 20"
Weight of Cushion	3 lbs / 1.4kg	11 to 12"	STOP111212	STOP111214	STOP111216		
Thickness	3 1/2" / 9cm	13 to 14"	STOP131412	STOP131414	STOP131416		
Weight limitation	300 lbs / 136kg	15 to 16"			STOP151616	STOP151618	STOP151620
		17 to 18"			STOP171816	STOP171818	STOP171820
		19 to 20"			STOP192016	STOP192018	STOP192020
		21 to 22"			STOP212216	STOP212218	STOP212220

* The actual depths are 12-14-16-18-20", but the rounded edges allow to accommodate a shorter depth of 1".



** The actual widths are 11 1/2 - 13 1/2 - 15 1/2 - 17 1/2 - 19 1/2 - 21 1/2", and each cushion is intended for two widths of wheelchair.

N.B. (1) THE INSTALLATION IS A FULL WIDTH FLAT BASE



(2) TO ORDER AN OUTER CUSHION COVER, PLEASE ADD THE LETTER < C > TO THE PRODUCT CODE.

(3) THE VELCRO™ OF THE COVER HAS A LOOP FINISH.

POSTURAL ACCESSORIES SELECTION



BREASTPLATES WITH ANTI-ELASTIC

- Backrest fastening system to secure the proper posture of the chest while sitting in a wheelchair
- The anti-elastic feature keeps the wheelchair user in a more secure position
- Adjustable in length and width
- Available in 5 models: 3 sizes & 2 shapes: 'H' and 'X'
- Modular system using compatible postural backrests: FLEXUS™, BACKUS™ & CURVUS™
- Very soft and hand washable

SPECIFICATIONS		'H'	'X'
LENGTH	Small – 12" (30cm)	STAR1182	
	Medium – 15" (38cm)	STAR1183	
	Large – 18" (46cm)	STAR1184	
	Medium – 13" (33cm)		STAR1193
	Large – 16" (41cm)		STAR1194
HARDWARE			
Breastplate anchoring system with mobile cursors		STAR1151	
Backrest fastener		SUMM1110	
Reinforcement bar		SUMM1106	
Mobile cursors to anchor breastplate		STAR1152	

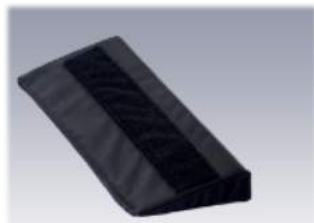


POSTURE BELTS

- A versatile 4-anchor-point-buckle belt that procures, depending how it is positioned onto the wheelchair, additional support for an optimal posture of the back or the pelvis
- Available in 3 sizes
- Modular system using compatible postural backrests: FLEXUS™, BACKUS™ & CURVUS™
- Very soft and hand washable

SPECIFICATIONS		
PELVIC WIDTH	Small – 10 to 13" (25 – 33cm)	STAR1162
	Medium – 14 to 17" (35 – 43cm)	STAR1163
	Large – 18 to 21" (45 – 53cm)	STAR1164

POSTURAL ACCESSORIES SELECTION



- In order to optimize the comfort and support, FORMUST™ is a back-support foam lumbar insert
- With FLEXUST™, FORMUST™ is inserted in between the rigid structure and the upholstered cushion, and secure on the Velcro strip
- With BACKUST™ & CURVUST™, FORMUST™ is inserted inside the upholstered cushion on the patient's back side and secure to the Velcro strip
- Available in 2 profiled shapes: contoured and beveled
- Each profiled shape is available in 4 sizes
- Modular system using compatible postural backrests: FLEXUST™, BACKUST™ & CURVUST™
- Wipe with damp cloth to clean

SPECIFICATIONS	CONTOURED		BEVELED	
	ADULT	CHILD	ADULT	CHILD
1" - Small - 6 x 12" (20 x 30cm)	FORM1240			
1 1/2" - Medium - 6 x 12" (20 x 30cm)	FORM1241			
1/2" - X-small - 5 x 8" (12 x 20cm)		FORM1270		
1" - Small - 5 x 8" (12 x 20 cm)		FORM1271		
1" - Small - 6 x 12" (20 x 30cm)			FORM1242	
1 1/2" - Medium - 6 x 12" (20 x 30cm)			FORM1243	
1/2" - X-small - 5 x 8" (12 x 20 cm)				FORM1272
1" - Small - 5 x 8" (12 x 20 cm)				FORM1273



CORPORATE HEADQUARTERS

2-1096 rue Lévis,
Terrebonne, Québec, Canada
J6W4L1

TEL: 1 450-964-3232

1 877-964-3232

FAX: 1 450-964-3378

www.positechinnovation.com

info@positechinnovation.com